



KILIFI CITIZEN FORUM PROFILE

Background Information

The initiation of Kilifi County Citizens Forum can be traced back from 2012 when the Kilifi citizens Forum with support from Action Aid Kenya did a social audit for community projects supported through the Constituency Development Fund (CDF) in the whole of Kilifi County. The social audit analysis revealed that; -

- ▶ Budget allocation for some of the projects were higher than the real cost of the project which was implemented.
- ▶ Som projects were incomplete while others were sub-standard.
- ▶ Wrong sites for projects than those which would be preferred by the community.
- ▶ Ghost projects as most of the constituency development fund supported projects were not on the ground as stated on paper.
- ▶ Most community members were not aware on how the projects were identified, how they were implemented and so did not know how to monitor the projects.
- ▶ Most funds were allocated to education and health while no funds were allocated for agricultural projects yet people in Kilifi County still rely on relief food
- ▶ Most dispensaries structures built have not offered any health services as intended.

The social audit analysis indicated that the root cause for the outcomes was due to;

- ▶ Poor leadership owing to lack of either citizens' or political pressure
- ▶ Dormancy of the civil society organizations to engage the duty bearers.

From the above background, Kilifi County Citizen Forum popularly known as Kilifi County Bunge la Mwananchi and registered as Citizen Participatory Development Group is a people driven organization or movement that promotes the fulfillment of citizen power of self-governance and enhancing peoples participation in the exercise of the power of state and in making sound decision on issues affecting them as enshrined in Article 174 (c) of the constitution of Kenya 2010. The main purpose of the initiative is to promote and foster purposive solidarity, synergy building and strengthening of People living in Poverty, Youth, Women, Men and People with Special needs or abilities for genuine democratic, political, social and economic transformation. The main drivers for the formation of Kilifi Citizens Forum includes; -

- ▶ Kilifi County has had persistent poverty situation due to the dominance of an authoritative leadership style resulting to having a population of 71.7% absolute poor and 67.35 % food poor within the society with.
- ▶ Kilifi County has more resources that have not been utilized fully for the betterment of the community.
- ▶ 2012 social audit report revealed massive misappropriation of public funds due to low community involvement and participation in the whole process of undertaking community development initiatives.
- ▶ The legal space provided for by the constitution of Kenya 2010 emphasizing on citizens participation in development undertakings and formulation of laws and policies

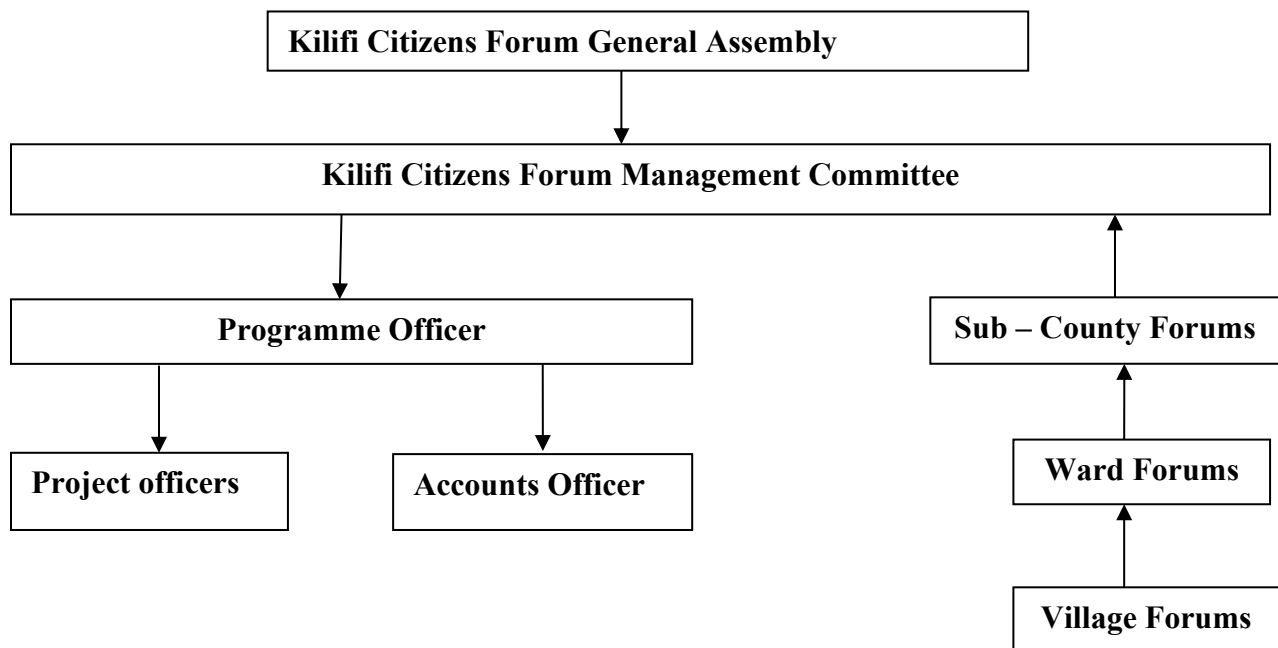
Vision, Mission and Motto

Vision - An informed, inclusive, peaceful and self-reliant society

Mission - Building the capacity of the community for active citizen participation in decision making and prudent engagement in resource management aimed at promoting quality service delivery.

Motto - Active citizens' participation for sustainable development

Kilifi Citizens Forum Structure



Organization Objectives

- i. Contribute toward promoting Constitutionalism
- ii. Advocacy towards addressing historical marginalization of women, youth, and persons living with disabilities (PwDs). Specifically, this will be in supporting the expansion of citizen participation in public affairs and political processes particularly for the marginalized groups and communities.
- iii. Enhancing social accountability among and between the community (rights holders) and duty bearers (Government) aimed at promoting Gender Responsive Public service delivery.
- iv. Contributing towards free and fair elections by conducting civic and voter education
- v. Promoting representation of citizens in elective institutions and governing boards with emphasize of women, youth and persons living with disabilities (PwDs) in leadership.

Kilifi Citizen Forum Strategic Objectives

The Kilifi Citizen Forum main focus is on promotion of **good governance** with the following strategic objectives; -

1. Empower the community to oversee and demand for accountability on public affairs
2. Empower women and girls to fight gender-based violence in the community
3. Empower youth and create linkages to existing government and private funding opportunities for social and economical initiatives
4. Empower the community secure their rights to lands and other natural resources
5. Build the Capacity of the community to realize their political rights

Achievements

Since when it was initiated, Kilifi Citizens Forum has undertaken a number of activities geared towards campaigns on women, youth and children rights, land for community and tax justice among others have yielded the following achievements;

- Facilitated formation of village and ward accountability forums to advocate for gender responsive budgeting process that ensures availability, Accessibility, Acceptability, adaptability and safe quality criteria in health, education, agriculture and water.
- Facilitated space for county budget analysis identified the gender responsive priority gaps and prepared memorandums for presentation to the county officials.
- Raised awareness and mobilized community support in the green amendment campaign through signature collection.
- Facilitated and participated in mobilization of rural women assemblies.
- Created platforms for women aspirants to profile themselves.
- Conducted civic education on land rights.
- Advocated for allocation of resources for land adjudication of Bamba and Mwareni.
- Participated and contributed to the Tax Study of Kilifi County 2013
- Provided civic education or awareness on the revenue generation gaps in Kilifi county
- Mobilized communities through ward accountability committees to be vigilant in allocation and utilization of resources to community projects.
- Facilitated the formation of project implementation committees for projects supported by public funds.
- Tracked implementation of projects and delivery of public services against the resources allocated and litigation.
- Facilitated civic education on Counter Violence and Extremism
- Provided civic education on the Constitution of Kenya 2010

The organization's strength lies in its ability to use the Human Rights Based Approach of development to promote community-led solutions to community problems, using the community led change plans in relation to the six policy steps. Kilifi Citizens Forum working platforms emanated from the village, ward and sub-county over to the county levels.

Several development actors have supported the Kilifi Citizens Forum activities over the years. These include the general community in Kilifi, ActionAid International Kenya (AAIK), Kilifi County Government and National Government agencies, Civil Society Urban Development, Muslim for Human Rights, ForumCiv and other civil society organizations among others.

Contacts

Kilifi Citizen Forum offices
Pekele Building Ground Floor
Kilifi Town
P.O Box 205 – 80108
KILIFI – KENYA

Tel: 0722 293306

Email address: klfcitizensforum@gmail.com

Web site: www.kilificitizensforum.org